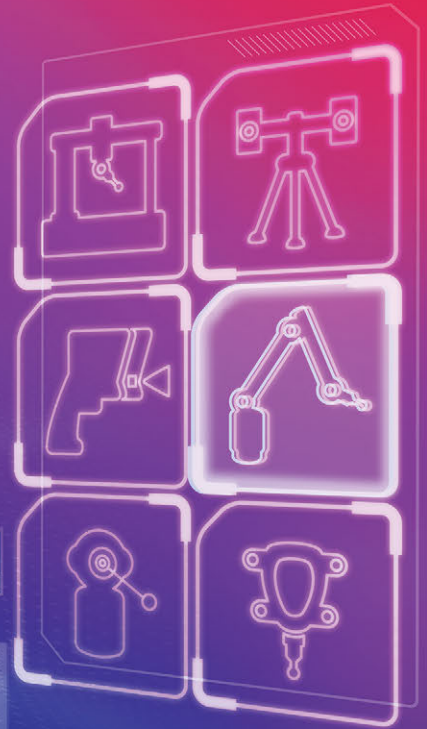


What's new in

# PolyWorks® 2020



3D Dimensional  
Analysis & Quality  
Control Solution

Strengthening  
your multipiece  
analysis and data  
capture capabilities

# Boost the quality of your project setups and analyses by leveraging multiple scanned pieces

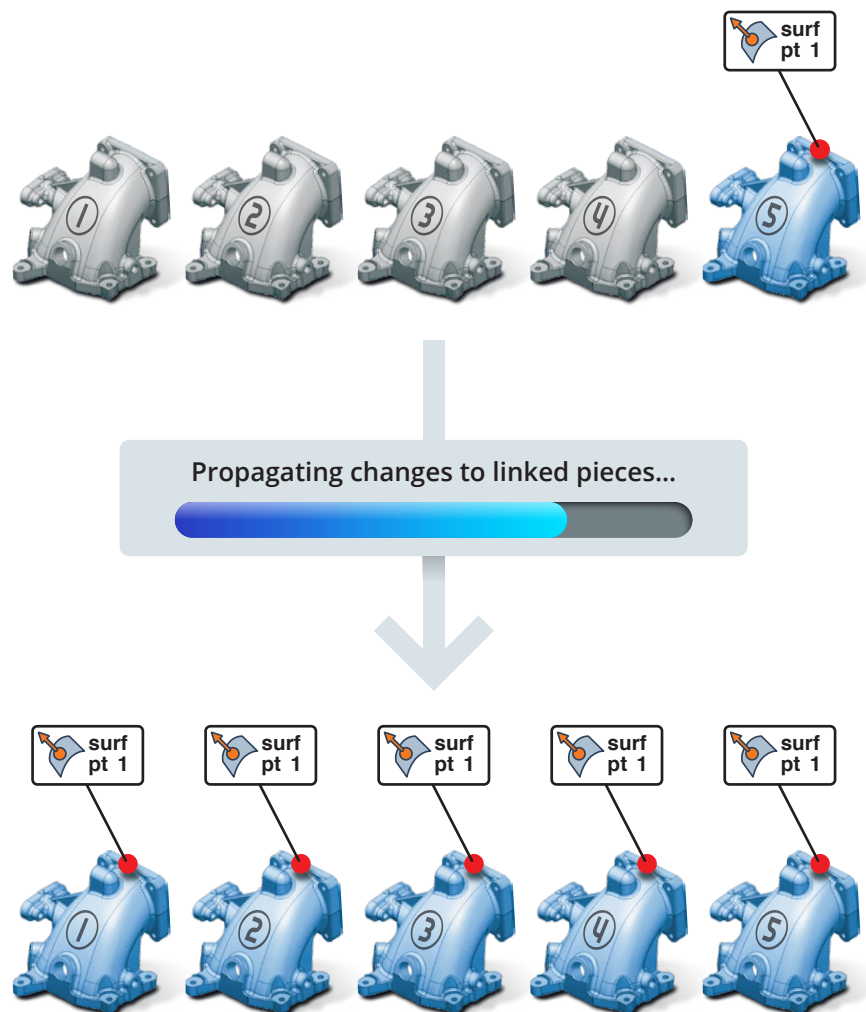
PolyWorks | Inspector™ now allows you to modify and add data alignments, measurement objects, and inspection reports for multiple measured pieces at once, so you can:

Prepare robust inspection projects that handle all pieces

- Build an initial project and start measuring pieces
- Fine-tune extraction and fitting parameters when a problematic piece is found
- Apply these changes to all previously scanned pieces **in one operation**
- Assess the quality of the remeasured objects and adjust parameters if necessary

Quickly investigate a failure by analyzing previously fabricated pieces

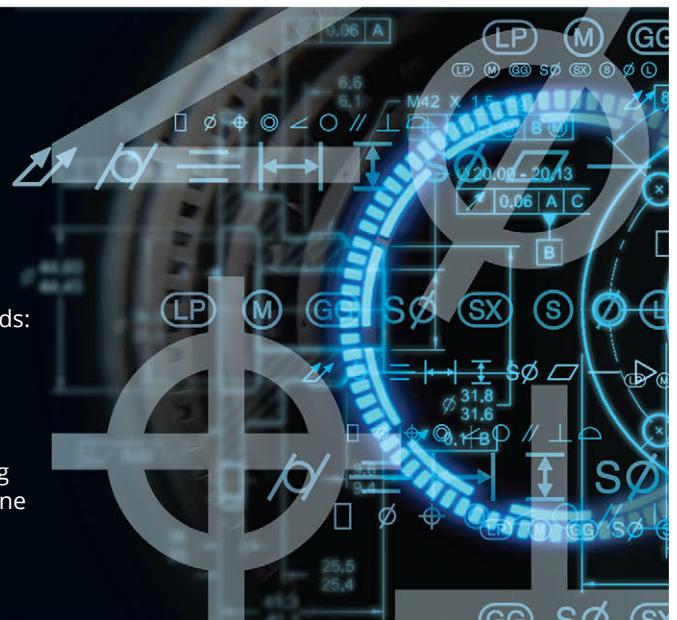
- Add new measurement objects to the failing piece to get additional information
- Create new controls and a report dedicated to the investigation
- Add the new objects and report to a subset of selected pieces **in one operation**
- Analyze the statistics and trend charts of the new dimensional controls



## Optimize and augment your GD&T toolkit

Our mathematicians have optimized existing algorithms and developed new ones to keep up with the evolution of the standards:

- Accelerate the calculation of 2-point distances
- Get more accurate and repeatable results when optimizing residual mobility
- Use the Combined Zone modifier to evaluate a pattern of mating features simultaneously, ensuring that final assembly can be done





# Extend the universality of your portable metrology solution

PolyWorks 2020 enhances the universality of its workflows and adds interfaces for new instruments:

- Construct planes and lines from already measured objects and access the complete GD&T toolbox and fitting statistics
- Trigger the use of Creaform laser scanners within the Play Inspection tool
- Enjoy high-performance measurement methods that leverage the capabilities of the Leica ATS600 tracker
- Connect to a MicroRidge MobileCollect wireless system and bring measurements from handheld gauges into your inspection projects



## Increase your CNC CMM productivity

The adoption of PolyWorks by CNC CMM users is quickly increasing, as they discover its outstanding usability and performance. Version 2020 stays on course:

- Accelerate the execution of CNC CMM sequences while probing in fly mode (up to 50% faster) and laser scanning
- Ensure that CMM positions are reachable by the machine to avoid invalid moves when defining a sequence offline, or assist users when porting a sequence to a CMM with a different measurement volume
- Control Hexagon and Zeiss CMM-based laser scanners through I++

# Simplify your life through an improved user experience

Improving the discoverability and ease of use of PolyWorks tools is a key element of every release plan:

- Quickly learn and master interactive modes, thanks to new user-friendly contextual toolbars and improved guidance
- Easily share customized toolbars and their macros with colleagues and partners by using the new toolbar import and export functionalities



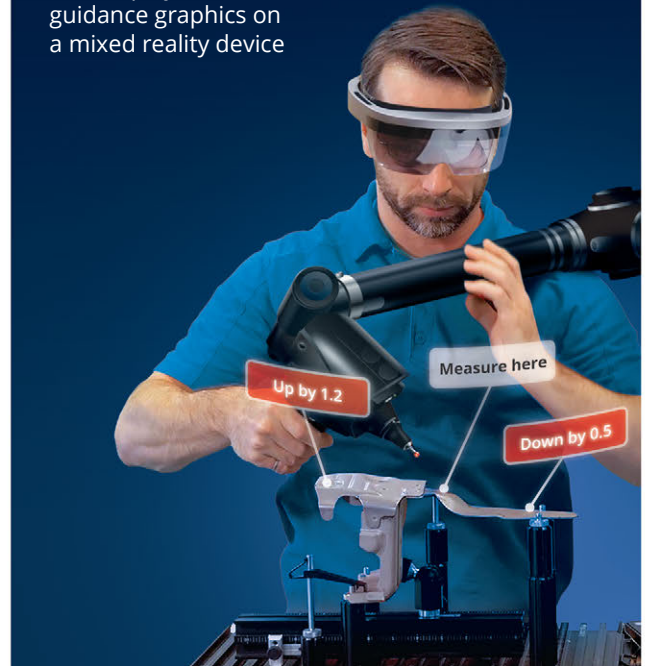
## Link multipiece inspection projects to your Excel spreadsheets with PolyWorks | ReportLoop™

Easily integrate measurement results of multiple pieces within your corporate Excel spreadsheets to smoothly transfer PolyWorks data to your Excel-based processes, such as Gauge R&R studies



## Integrate mixed reality display from PolyWorks | AR™ into your guided measurement workflows

Create PolyWorks | Inspector measurement sequences that display custom guidance graphics on a mixed reality device



© 2020 InnovMetric Software Inc. All rights reserved. PolyWorks® is a registered trademark of InnovMetric Software Inc. InnovMetric, PolyWorks | Inspector, PolyWorks | Modeler, PolyWorks | Talisman, PolyWorks | Reviewer, IMAlign, IMMerge, PolyWorks | DataLoop, PolyWorks | PMI+Loop, PolyWorks | AR, PolyWorks | ReportLoop, "The Universal 3D Metrology Software Platform", "The Smart 3D Metrology Digital Ecosystem", and "Interconnecting Hardware, Software and People" are trademarks of InnovMetric Software Inc. SmartGD&T is a trademark of Multi Metrics Inc. All other trademarks are the property of their respective owners.



SmartGD&T™

Corporate Headquarters:

**innovmetric**  
Your 3D Metrology Software Partner

**InnovMetric Software Inc.**  
2014 Cyrille-Duquet, Suite 310, Québec QC G1N 4N6 Canada  
Phone: 1-418-688-2061 | 1-888-688-2061  
info@innovmetric.com | www.innovmetric.com